

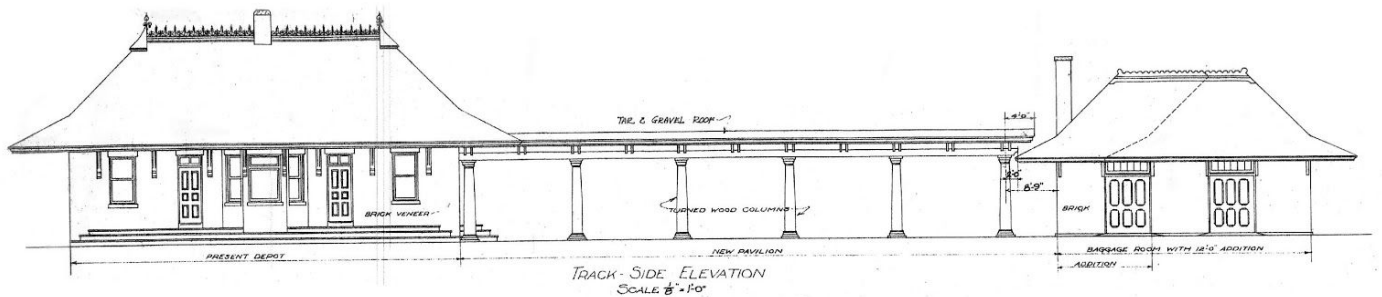
## Depot-Pavilion-Transit Hub Complex



1888 depot on left and transit center (a City project) on right linked by sheltering pavilion

- highly visible, attractive gateway to the City
- historic, multi-use depot as tourist attraction; visitor information and amenities
- open pavilion for events: weddings, birthday parties, art shows, markets, and musical performances;
- public sculpture garden with fountain; way-finding signs
- track side trail between 2<sup>nd</sup> and 3<sup>rd</sup> Streets with seating, bike racks and bike repair station
- driveway with easy pick up and drop off by car, transit vans, taxis, and buses

## Milwaukee Railroad 1917 Plan



To meet the community's request in 1917 for more shelter and baggage space, the Milwaukee Railroad proposed additions to the 1888 depot: an enlarged baggage house on the right and a connecting pavilion. In 1910 the baggage room in the depot had been converted to bathrooms and a separate small baggage house was built (see dotted lines in plan); 1917 plan for pavilion and enlarged baggage house was never executed.

## Repair of Sculpture for Depot Garden<sup>1</sup>

6-12-18



Sculptor, Nick Swearer, returned to Northfield from CT to repair “Tree”, made of railroad spikes.



Working this morning on repair.



Nick, age 14, when he created sculpture for the Guthrie family who donated it to the Depot project.

Nick collected the discarded railroad spikes near the Northfield Depot in 1971 when the railroad ties were being replaced. He commented, “The spikes are coming home”.

In his mid-teens, he created the 40 foot long iguana, Iggy, from 12,500 railroad spike heads. It has stood in front of the Science Museum of Minnesota for more than 35 years.

His studio/foundry is located in CT; he is an award winning sculptor and has his work in public and private collections throughout the country and abroad.



“Flame”, created in 1974, was commissioned by Jim Herreid and located by the river (see photo).

It was removed when the Riverwalk was built, and stored by a friend who donated it to the Depot project.

“Flame” was also repaired in the past few days.



<sup>1</sup>This activity is made possible by the voters of Minnesota through a grant from the Southeastern Minnesota Arts Council thanks to legislative appropriation from the arts & cultural heritage fund